

Coffee Beenz Button Cowl

One Size Fits All -24" in diameter and 7" in height



Materials: Coffee Beenz, 100 gm; 2 balls, 1 in color A (shown in 9456) and 1 in color B (shown in 9204)

Gauge: 18 sts = 4" on size US size 8 needle, or size to obtain gauge.

Needles: US size 8, cable needle. 6 Dill buttons (#330325 -20 mm)

C8RibF=slip next 4 sts onto cable needle and hold at **front** of work, *k1, p1* 2 times; then *k1, p1* 2 times from cable needle.

C8RibB=slip next 4 sts onto cable needle and hold at **back** of work, *k1, p1* 2 times; then *k1, p1* 2 times from cable needle

NOTE: Always cross yarns at the center intersection to insure no holes. Remember the old color goes under and the new color goes over.

Directions:

Cast on 32 sts with Color A, then 32 sts with Color B. 64 sts total.

Abbreviations: K = knit, k2tog = knit 2 sts together, p = purl, st st = stockinette stitch, st(s) – stitch(es), yo = yarn over.

PLYMOUTH YARN®

DESIGN • STUDIO

FREE WITH YARN PURCHASE

F494

Row 1 & 2: Work in 1x1 Rib as follows *K1, P1* with Color B for 32 sts, then crossing Color A under Color B, *k1, p1* for 32 sts with Color A.

Row 3: *C8RibF, [k1, p1], 4 times*; 2 times with Color A, then repeat from * to * with Color B.

Row 4 & 6: *k1, p1* with Color B for 32 sts, then 32 with Color A.

Row 7: [k1, p1] 4 times, C8RibB* 2 times with A then repeat 2 times with Color B.

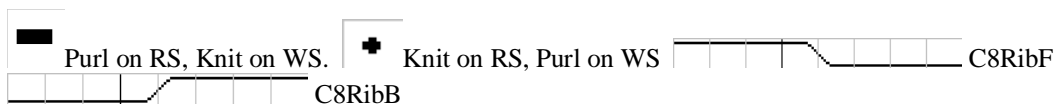
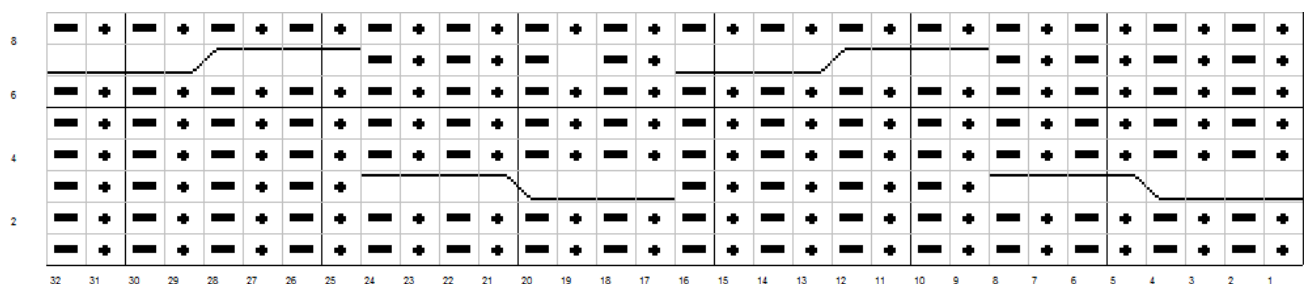
Row 8: *k1, p1* 32 sts with B then 32 sts with A.

Repeat rows 3-8 until piece measures desired length, shown as 24" End on row 4.

SEE CHART BELOW

To bind off follow these instructions for the buttonhole bind off:

Bind off 3 sts *loop yarn over right hand needle, bind off over loop; rep this loop bind off 3 more times, bind off 10 sts: rep from * bind off remaining sts. You have worked 6 buttonloops total.



©2013 Plymouth Yarn Company. 021513cab

Abbreviations: K = knit, k2tog = knit 2 sts together, p = purl, st st = stockinette stitch, st(s) – stitch(es), yo = yarn over.